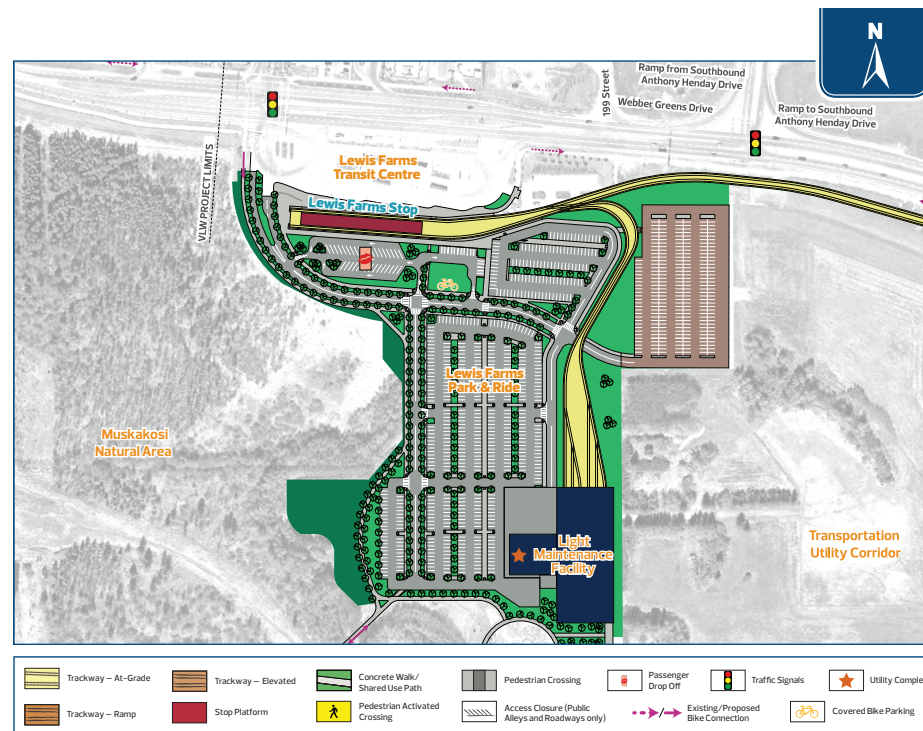
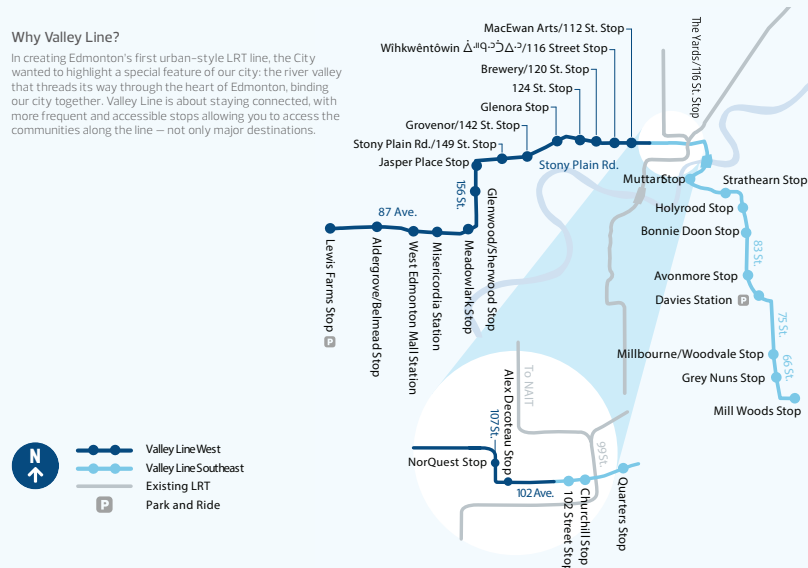


VALLEY LINE LRT LEWIS FARMS – DOWNTOWN – MILL WOODS

Why Valley Line?

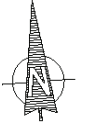
In creating Edmonton's first urban-style LRT line, the City wanted to highlight a special feature of our city: the river valley that threads its way through the heart of Edmonton, binding our city together. Valley Line is about staying connected, with more frequent and accessible stops allowing you to access the communities along the line – not only major destinations.



Through public engagement, area residents chose a park-like theme for the Lewis Farms Stop.

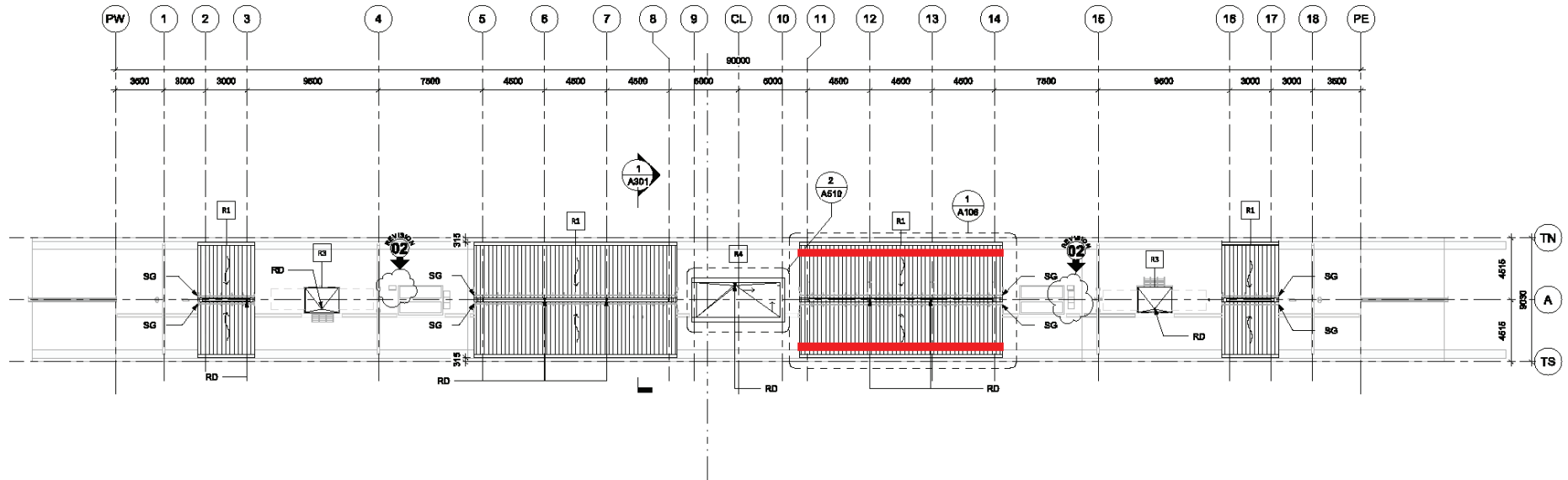
The Valley Line West LRT will start at the Lewis Farms Transit Centre and Park & Ride, which is located southwest of Webber Greens Drive and Anthony Henday Drive. The LRT stop will be integrated with the existing transit centre and an expanded Park & Ride facility.

Lewis Farms Stop



Legend

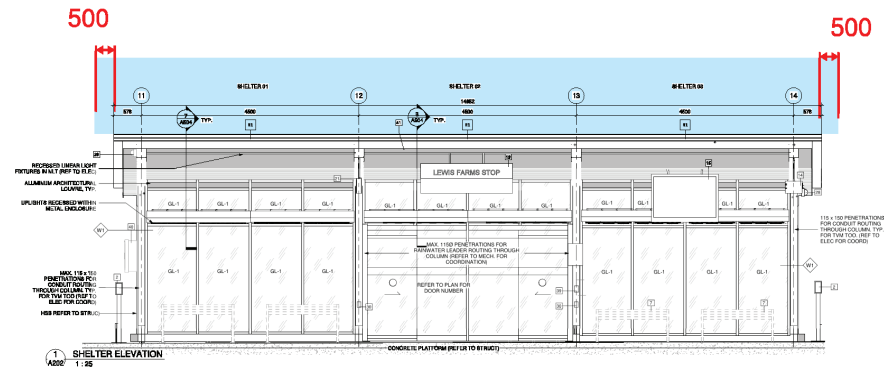
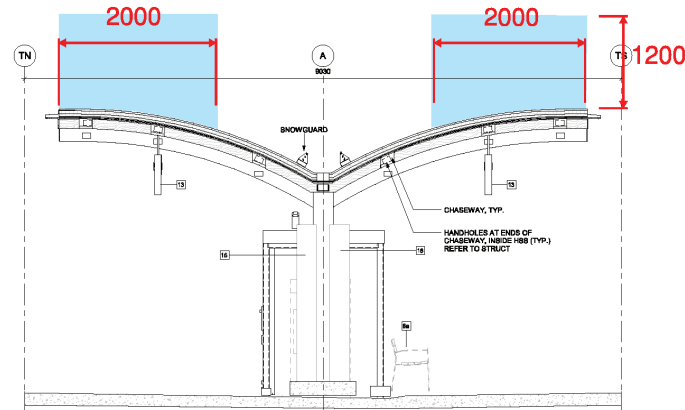
- Continuous steel support rail/beam required above Canopy for Public Art.
- Max total weight of art per Canopy = 500 lbs and may be randomly distributed or concentrated at any point along a support rail.

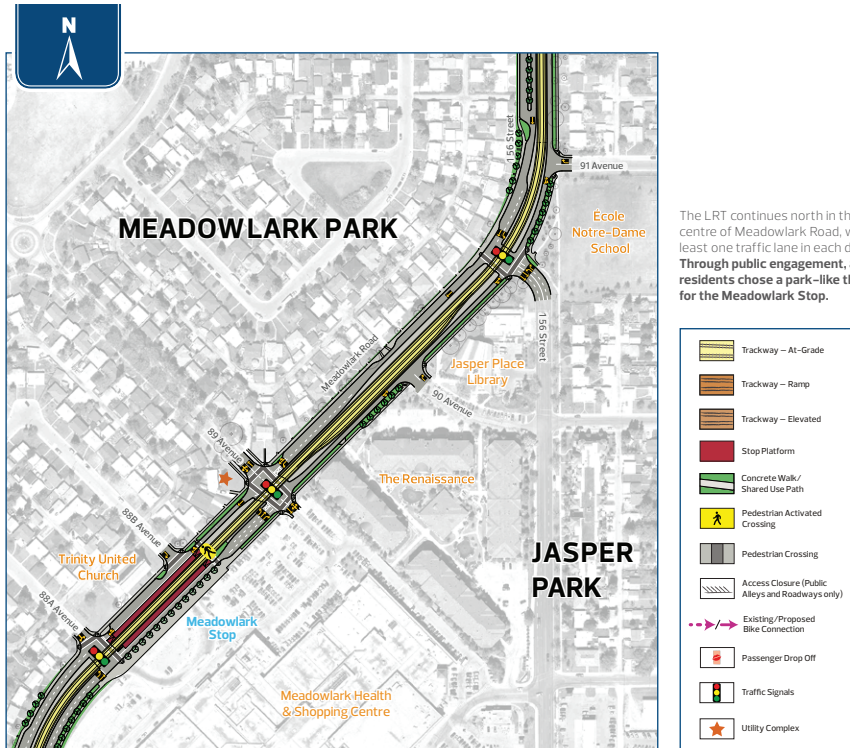


Lewis Farms Stop

Legend

Space that may be occupied by Public Art

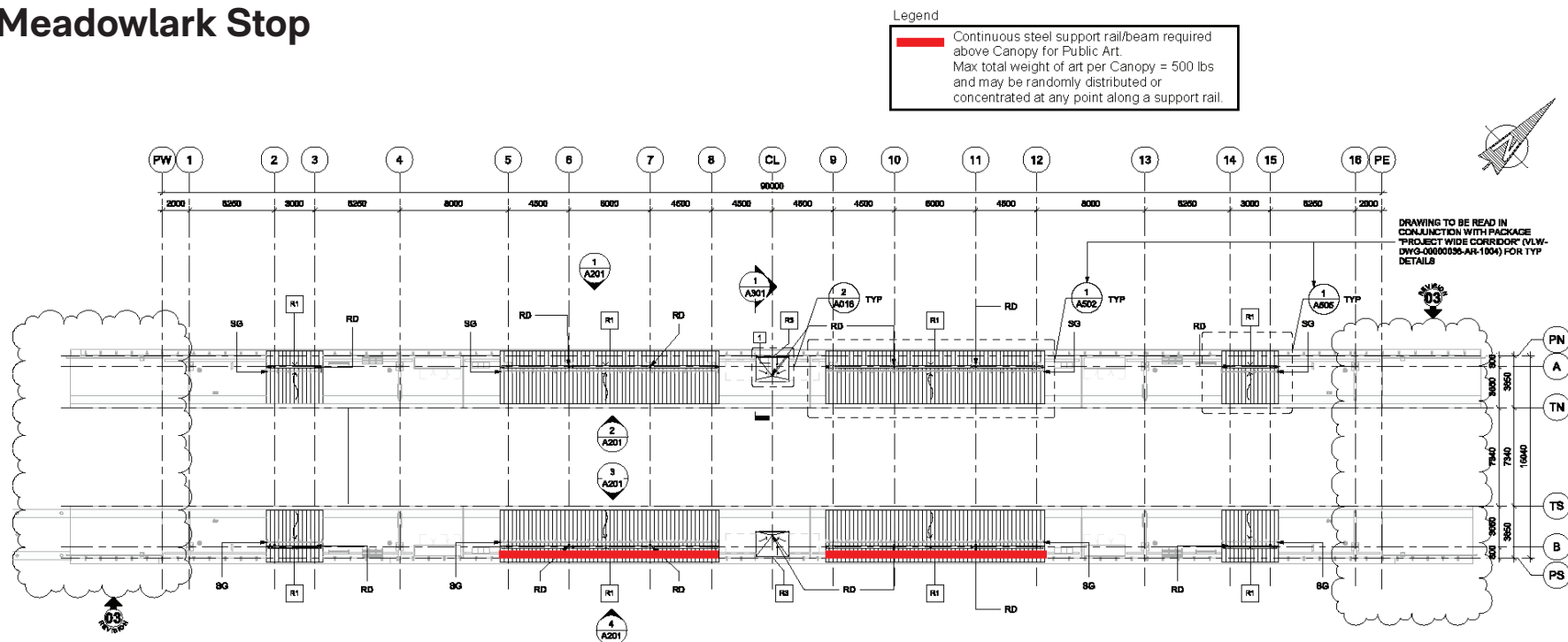


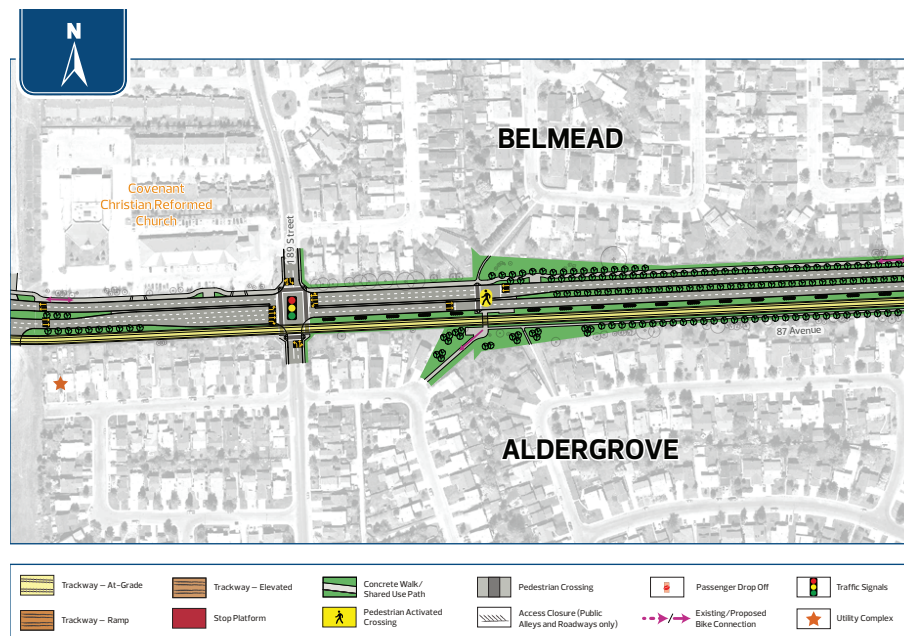


The LRT continues north in the centre of Meadowlark Road, with at least one traffic lane in each direction. Through public engagement, area residents chose a park-like theme for the Meadowlark Stop.



Meadowlark Stop



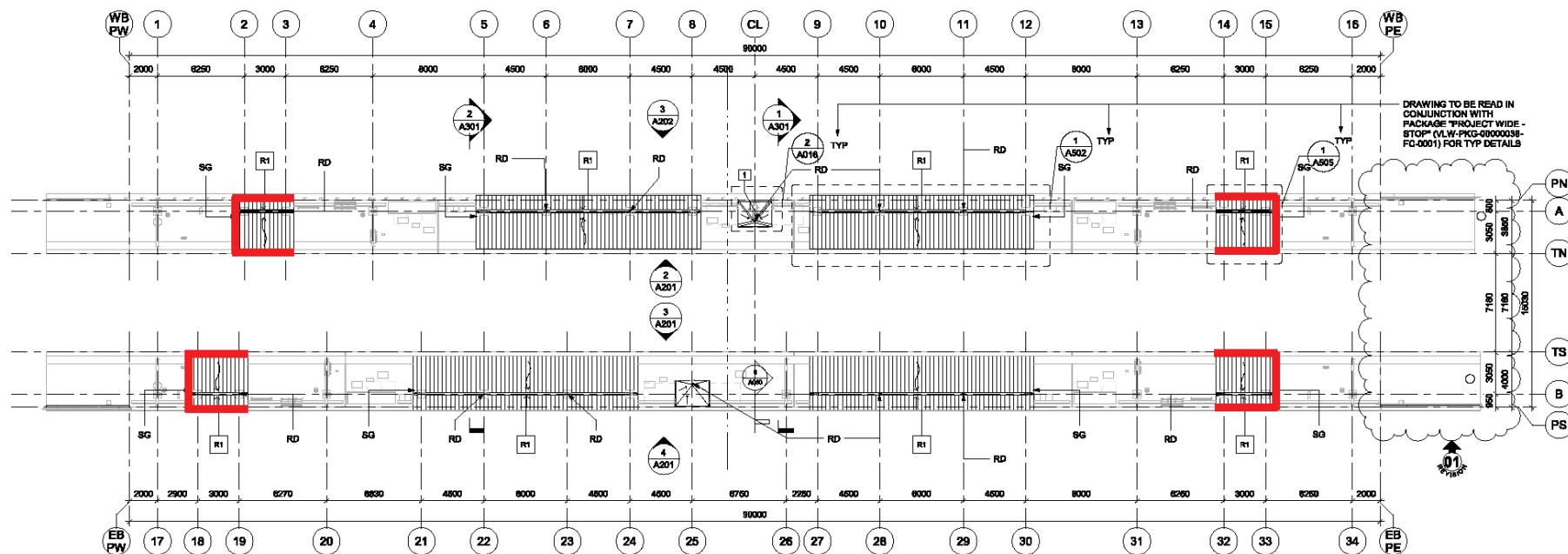


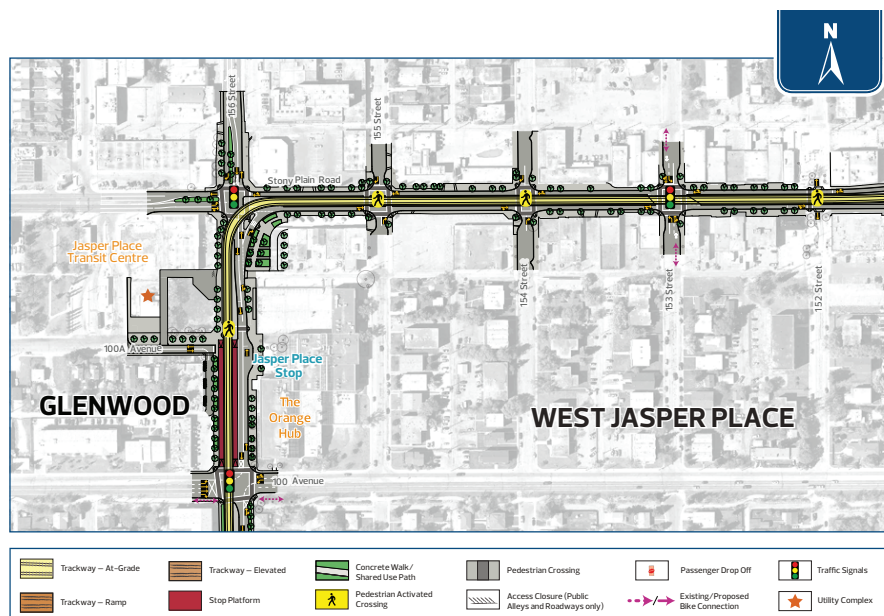
The LRT continues on the south side of 87 Avenue at street level. The intersection at 189 Street will provide access into the nearby neighbourhoods of Aldergrove and Belmead.



Legend

Continuous steel support rail/beam required above Canopy for Public Art.
Max total weight of art per Canopy = 500 lbs and may be randomly distributed or concentrated at any point along a support rail.





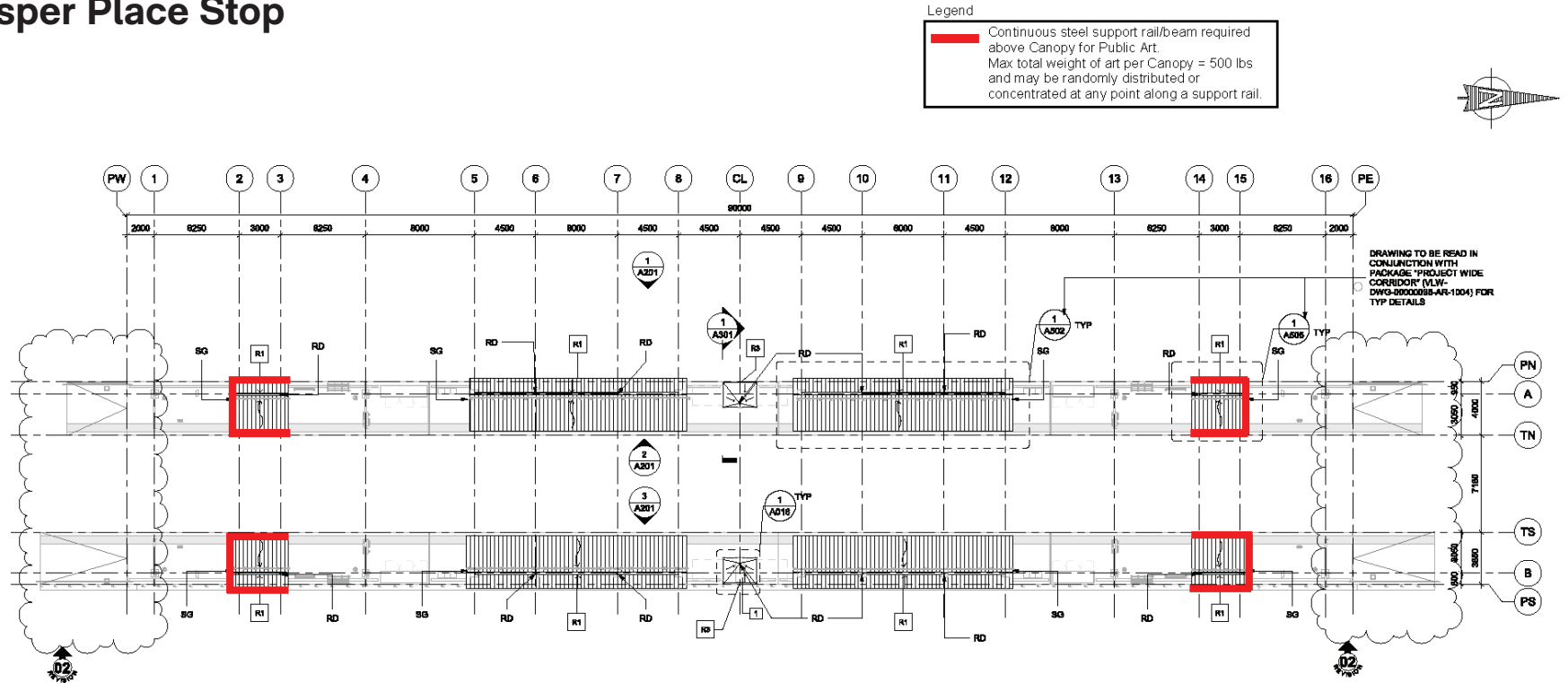
Through public engagement, area residents chose a park-like theme for the Jasper Place Stop.

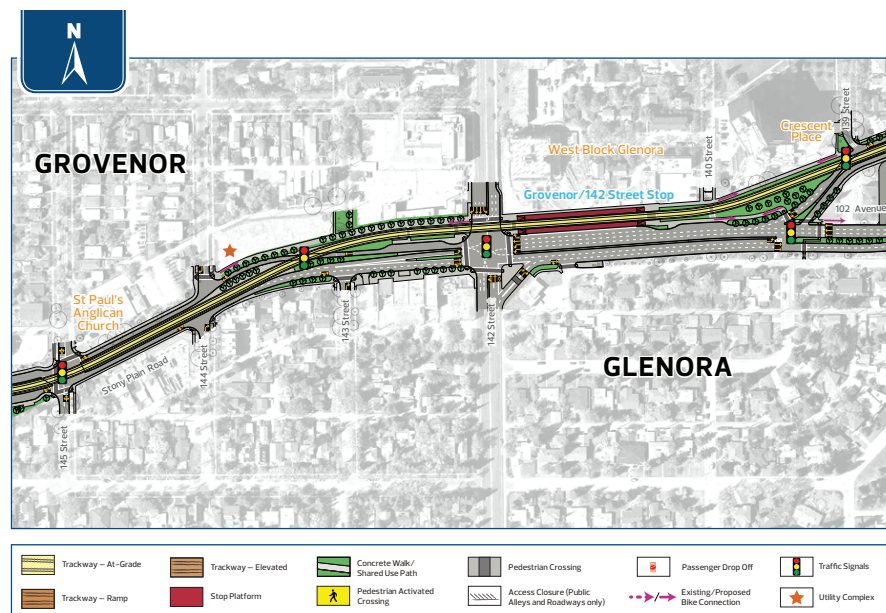
The LRT will continue north along the west side of 156 Street towards Stony Plain Road, with northbound and southbound single lanes of traffic both running to the east side of the LRT. The Jasper Place Stop is located north of 100 Avenue, serving the Stony Plain Road business area and

providing access to the nearby Jasper Place Transit Centre, as well as nearby residential neighbourhoods.

Approaching Stony Plain Road, the LRT turns east to run along the centre of Stony Plain Road with one lane of traffic in each direction. A signalized intersection will be provided at 153 Street to allow vehicles and bikes to cross the tracks.







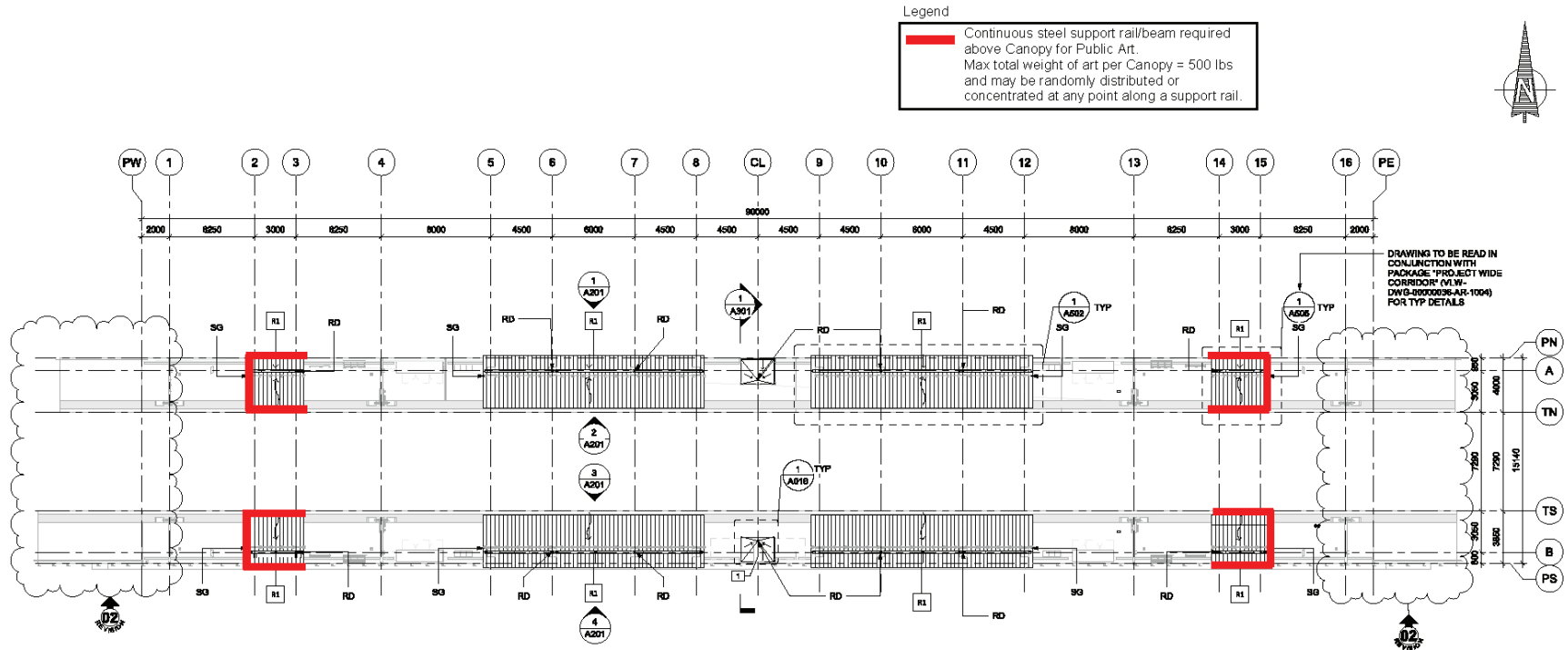
Through public engagement, area residents chose a park-like theme for the Grovenor/142 Street Stop.

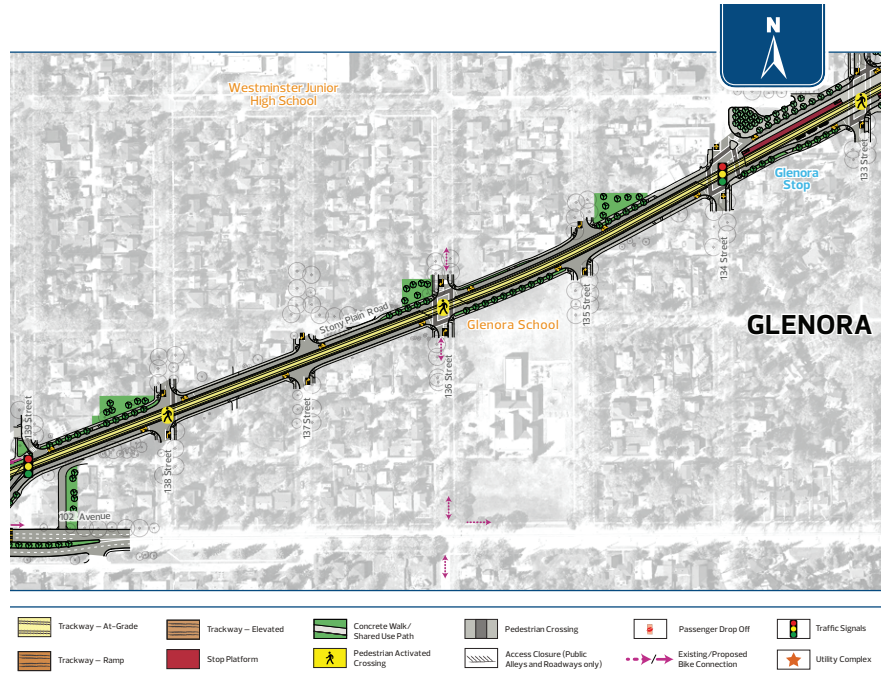
The LRT will continue east on Stony Plain Road, shifting to the north side of the road east of 144 Street.

The LRT will then cross on the north side of this intersection travelling to the Grovenor/142 Street Stop, which will serve the existing mature neighbourhoods.



Grovenor/142 Street Stop






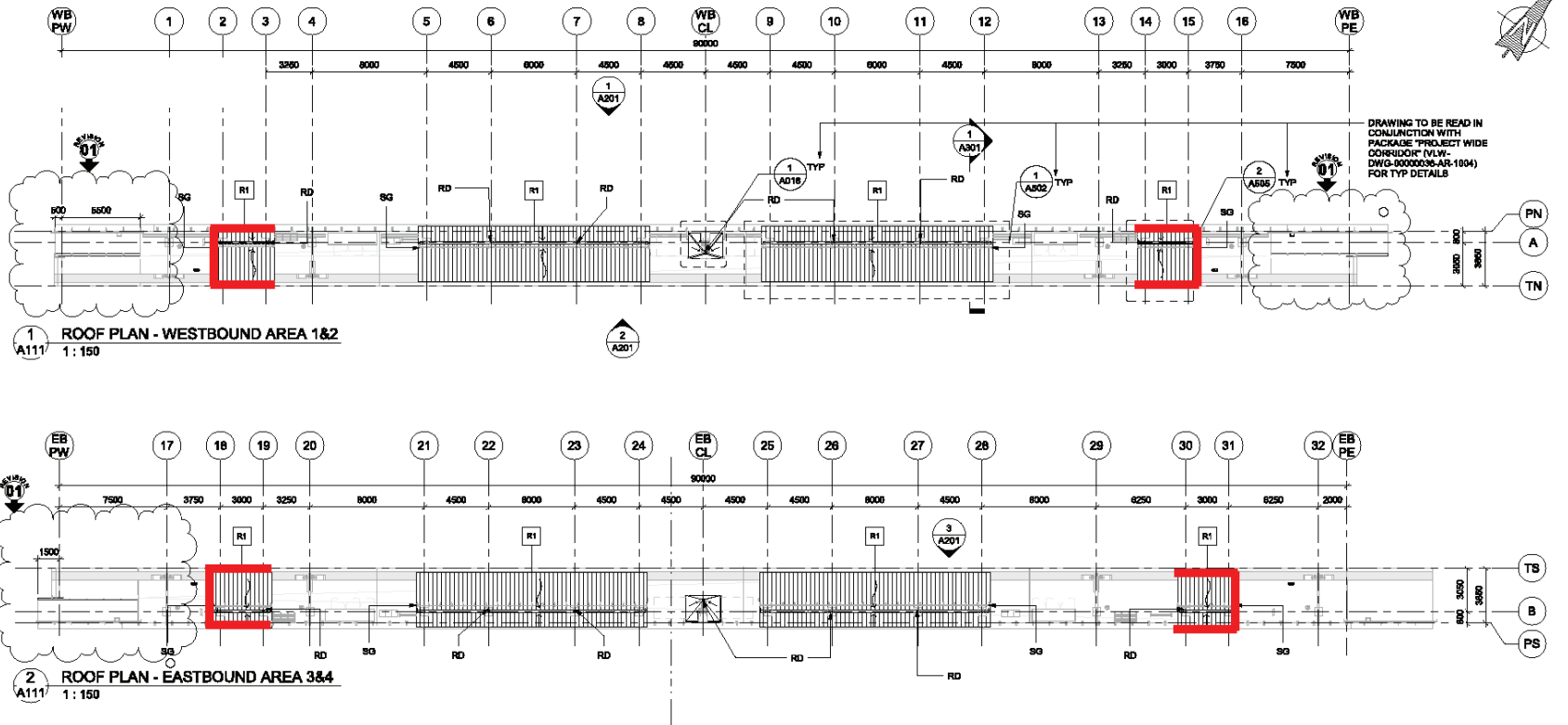
The LRT will move to the centre of Stony Plain Road at approximately 139 Street and continue east to the Glenora Stop located at the 133 Street intersection. Traffic will be one lane in each direction.



Glenora Stop

Legend

 Continuous steel support rail/beam required above Canopy for Public Art.
Max total weight of art per Canopy = 500 lbs
and may be randomly distributed or
concentrated at any point along a support rail.



- Aldergrove/Belmead
- Glenora
- Grovenor/142 Street
- Jasper Place